

# Get reimbursed with MCSIG CompleteCare<sup>®</sup>

## What is CompleteCare?

CompleteCare reimburses you (the employee) and your dependents for eligible health care expenses and premium expenses incurred under alternate group health coverage.

## CompleteCare Benefits

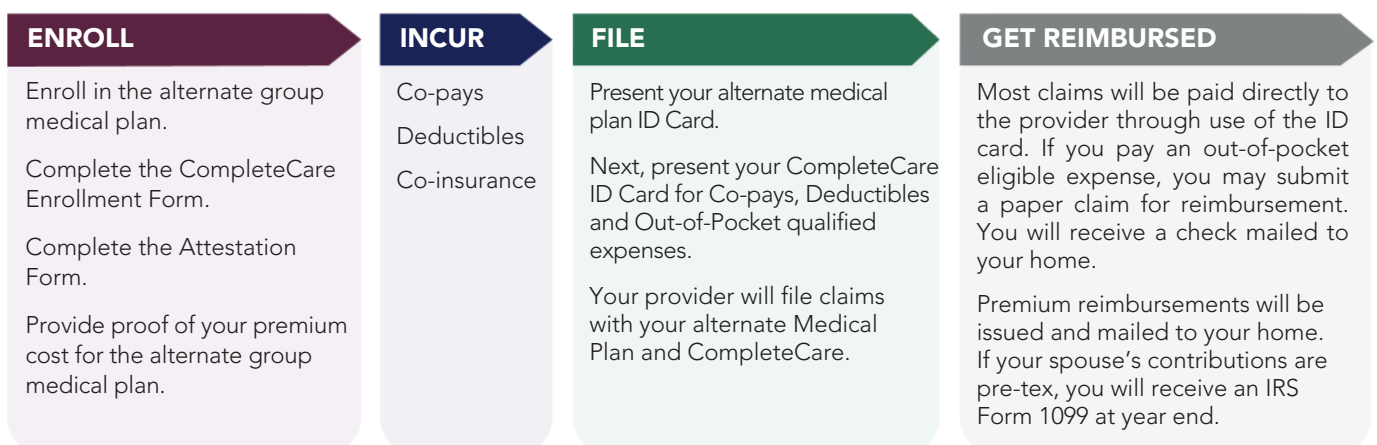
- Co-pays, deductibles and co-insurance reimbursed by CompleteCare up to \$9,450/single and \$18,900/family per year.
- You will be reimbursed for the premium contribution paid for the alternate coverage if it exceeds the premium contribution that you would have paid to remain on the MCSIG medical plan up to a monthly maximum of \$100/single, \$200/2-party and \$300/family. If the cost of alternate

coverage is less than you would have paid for the MCSIG medical plan, the premium contribution reimbursement is \$0.

## IRS Rules

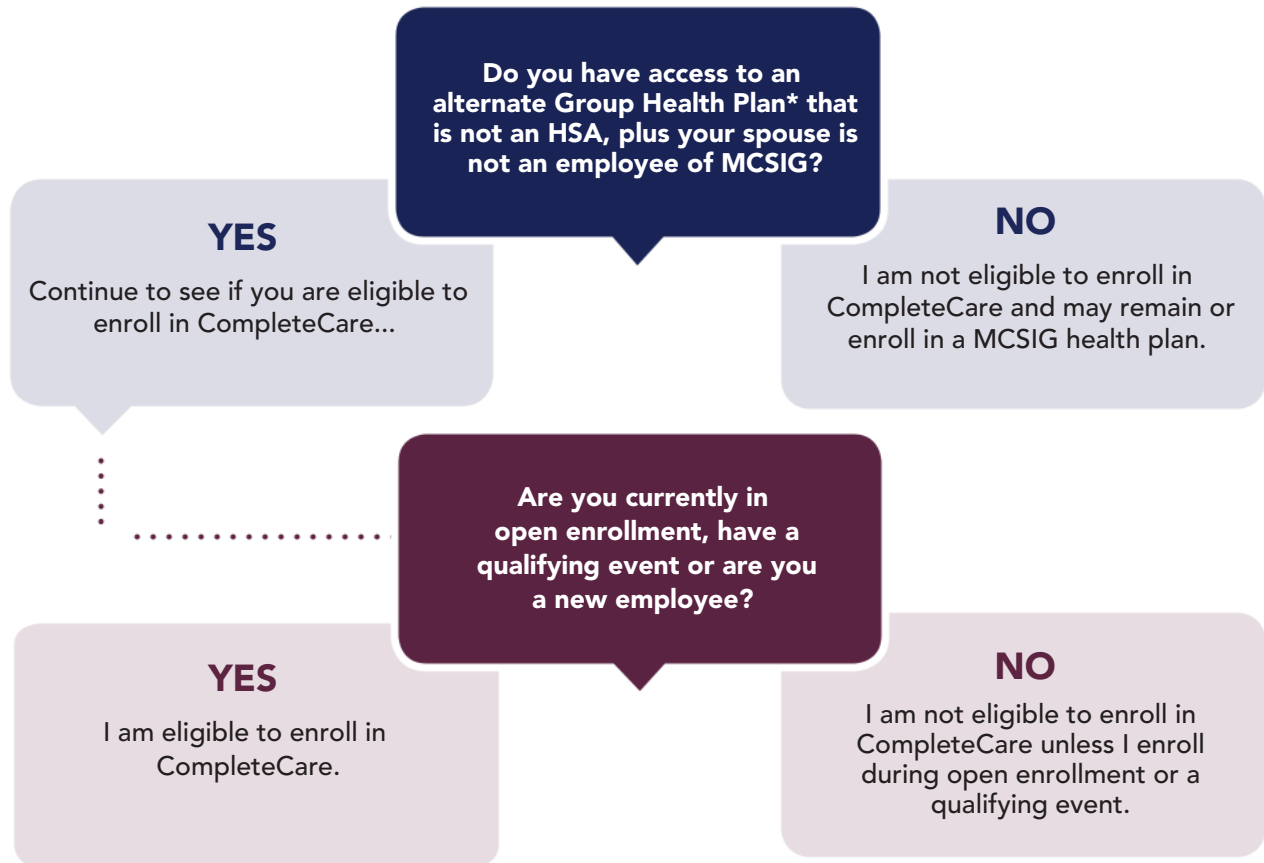
- You may be enrolled in an HRA or FSA. You CANNOT be reimbursed from both CompleteCare and your HRA or FSA.
- You are NOT eligible for CompleteCare if your alternate coverage:
  - a high deductible health plan (HDHP) with active contributions to a Health Savings Account (HSA);
  - Medicare, Medicaid, Tricare or an Individual Policy.

## How Does CompleteCare Work?



*(continued on back)*

## Are you eligible for CompleteCare?



\*Your alternate plan's open enrollment is considered a qualifying event.

If at any point an employee loses access to their alternate group health plan – a Qualifying Event – you will be able to enroll in MCSIG's group health plan.

CompleteCare participants are eligible for MCSIG life insurance; no other MCSIG value added benefits are eligible (e.g. Teladoc, Transcarent, Acupuncture, etc.).



For more information, scan the QR code to access the Resource Center, contact Catilize Health at 877-872-4232 or email us at [completecure@catilizehealth.com](mailto:completecure@catilizehealth.com).



MCSIG  
municipalities • colleges • schools  
insurance group

Keenan®

Keenan & Associates  
CA License No. 0451271 | 24.FLY.09.13



Catilize Health