

Presentation to Academic Affairs Council

Office of Continuing Education

Ana González
Director of Academic Affairs,
Continuing Education
November 13, 2019





Vision

Hartnell College students will be prepared to contribute as leaders to the intellectual, social, cultural, and economic vitality of our communities and the world.

Mission

Focusing on the education and workforce development needs of communities in the Salinas Valley, Hartnell College strengthens communities by providing opportunities for students to reach career and/or academic goals (associate degrees, certificates of achievement, transfer to four-year institutions) in an environment committed to student learning, achievement, and success.

Strategies

Students First; Academic and Service Excellence; Diversity, Equity, and Inclusion; Ethics and Integrity; Alliances; Leadership and Empowerment; Innovation; Stewardship of Resources; Health, Safety, and Security



In the Salinas Valley...

- **70,000 (34%)** have limited English skills (compared to 21% in CA)
- **38,000 adults (19%)** have 7th grade education or lower
- **65,600 adults (32%)** do not have a HS Diploma (compared to 17% in CA)
 - 108,800 (91%) speak Spanish at Home (followed by 1.8% Tagalog)
 - 4 Correctional Institutions located in the Valley
 - 10,000 incarcerated Men and Women in our district

<https://caladulthood.org/2019FactSheets>

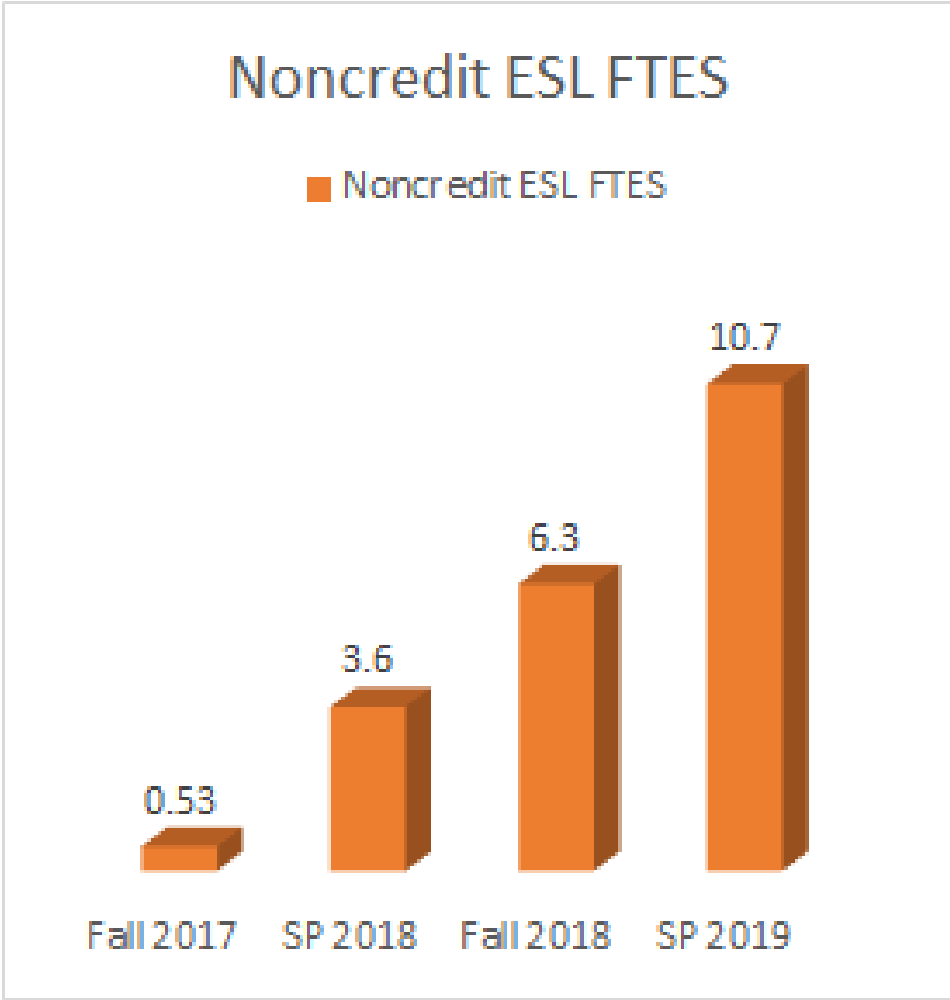
Office of Continuing Education focuses on:

- Noncredit Programming/English Language Learners
- Currently and Formerly Incarcerated Students



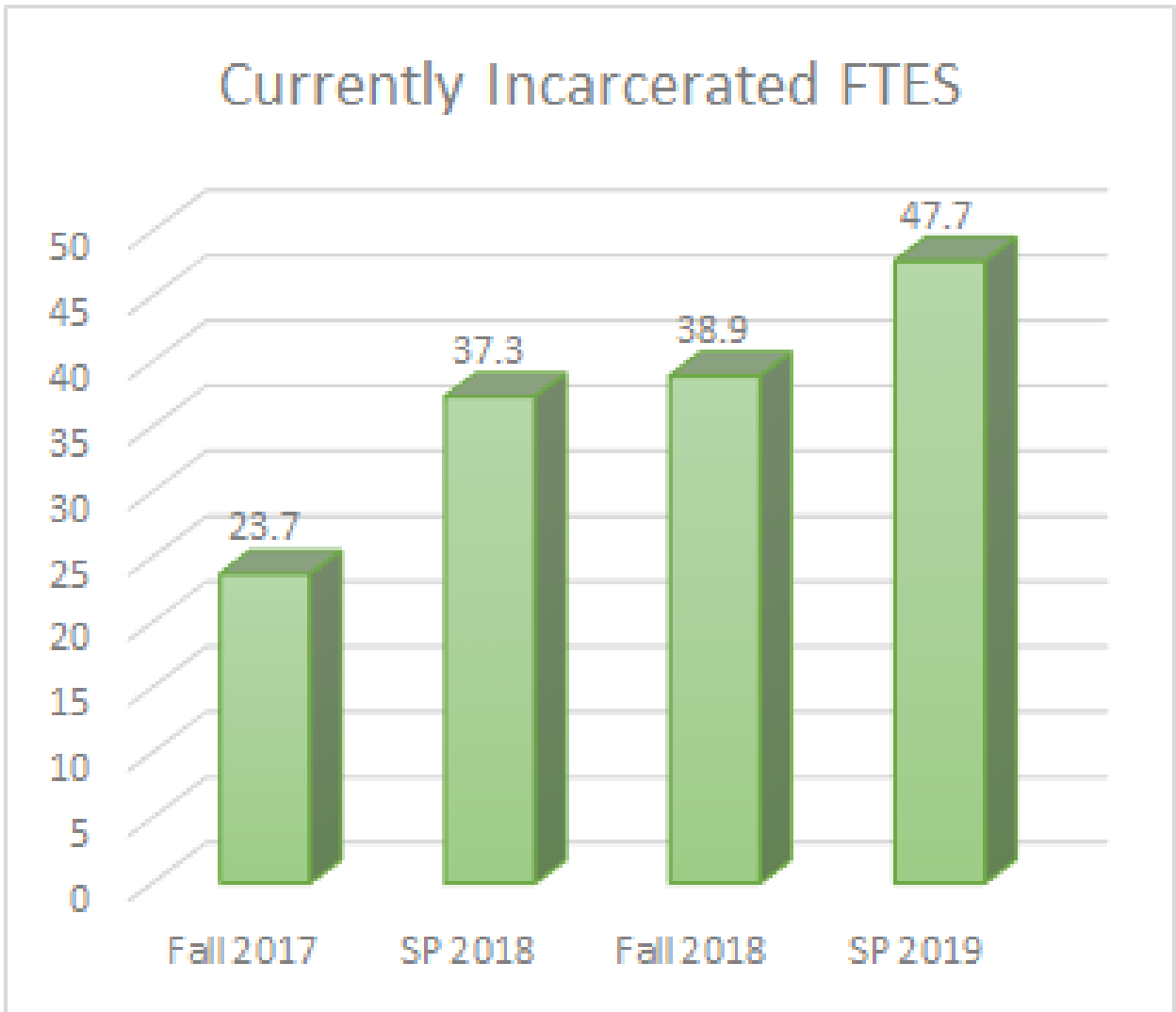
Access to Education for ESL and Incarcerated Students:

- Faculty
 - Recruit, Contract, Orient, Clearance Training, Evaluate, Support/Professional Development
- Course Creation
 - Offer courses that meet students' needs by offering courses that are appropriate, meet at various locations, and at various schedules (ESL)
 - transferable, credit bearing courses for incarcerated
- Matriculation Support
 - Paper Applications, Placement, and Registration
 - Access to Counseling (Educational Plans) and Financial Aid



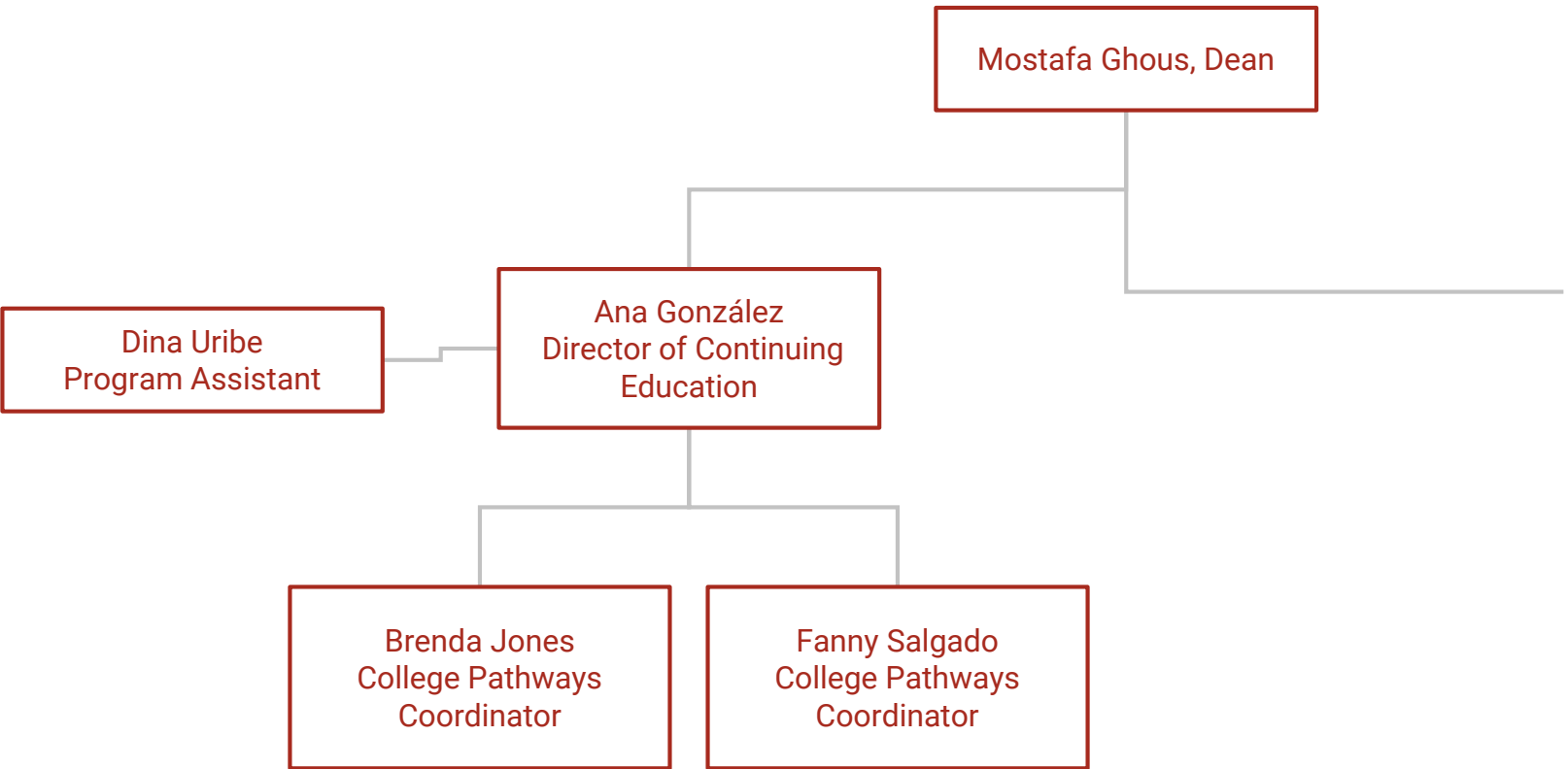
Note:
1 FTE = 525 hours
Noncredit ESL
Courses are
24 hours

Noncredit ESL is eligible for CDCP funding of \$5,457 per FTE



Funded at \$5,457 per FTE

Continuing Education Team





Noncredit ESL

Students:

- **Student Perception** - Is college for me?
- **Limited Computer Skills** - paper application and registration

Hartnell:

- **Faculty Recruitment** - more needed
- **Marketing** - increase community awareness
- **Systems Built for Traditional Students** - Office hours, computer based processes
- **Pathways** - clarify ESL pathway, need CTE options
- **Data Collection/Reporting** - Adult Ed., MIS, New Student Funding Formula
- **Limited Resources** - staffing

Inmate Education

Students:

- **Lack of Technology** - all paper and pencil

Hartnell:

- **Faculty Recruitment** - need more faculty, working conditions
- **Professional Development** - unique population and environment
- **Systems Built for Traditional Students** - paper based enrollment, add/drop, assignments, grading, transcripts
- **Provision of Student Support Services**
- **Pathways** - ability to complete degree
- **Data Collection** - MIS & New Student Funding Formula
- **Limited Resources** - staffing and funds

Correctional Facilities:

- **Multiple and Distinct Yards**
- **Challenge Entering/Leaving Facility**
- **Lockdowns**



Current Projects:

- Updating Marketing (5-12 touch points needed)
- Matriculation Mondays/Lanzate Lunes
- Student Handbook
- Faculty Handbook
- Faculty support/professional development
- Clarifying vocational and academic pathways that meet student needs
- Data Collection and Data Elements
- Advocacy for Nontraditional Students
 - College Redesign and Guided Pathways
 - Broadening concepts of Equity and Inclusion

